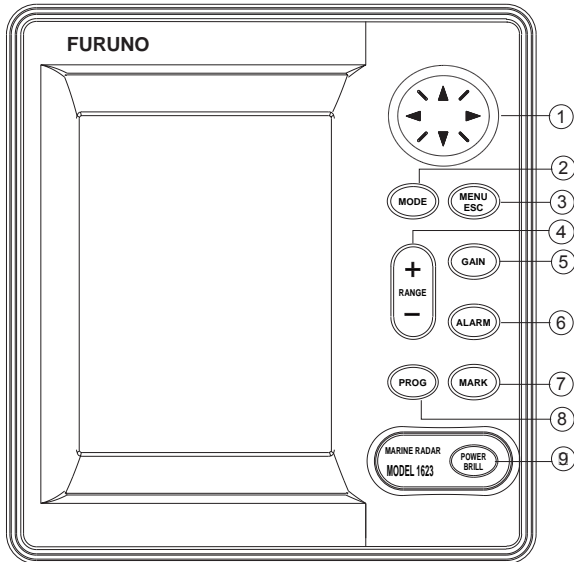


## MODEL 1623 MARINE RADAR

### Operator's Guide

The purpose of this Operator's Guide is to provide basic operating procedures for this equipment. For more detailed information see the Operator's Manual.



- ① Selects menu items; adjusts VRM, EBL and cursor.
- ② Selects display mode.
- ③ Opens/closes menu; escapes from current operation.
- ④ Selects basic display range.
- ⑤ Adjusts gain.
- ⑥ Enables/disables guard alarm.
- ⑦ Outputs L/L position to external equipment; registers selected position as waypoint.
- ⑧ Menu short cut.
- ⑨ **Long press:** Turns power on/off.  
**Momentary press:** Adjusts display contrast and brilliance.

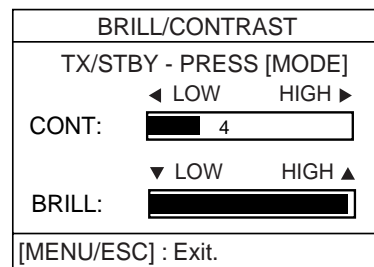
### Turning the Power On/Off

**Turning on the power:** Press the [POWER/BRILL] key more than one second to turn on the power.

**Turning off the power:** Press the [POWER/BRILL] key until the screen goes blank.

### Adjusting Tone and Brilliance

1. Press the [POWER/BRILL] key momentarily to show the brilliance/contrast adjustment window.



2. **Contrast:** Press left or right arrow  
**Brilliance:** Press up or down arrow.
3. Press the [MENU/ESC] key to finish.

### Transmitting, Standby

1. Press the [POWER/BRILL] key momentarily to show the brilliance/contrast adjustment window.
2. Press the [MODE] key to go to standby and transmit alternately.
3. Press the [MENU/ESC] key to finish.

### Choosing the Range

Press the [RANGE+] or [RANGE-] key to select a range.



## Automatic Adjustment of Sensitivity

1. Press the [GAIN] key consecutively until the display shown below appears.

GAIN	
AUTO	: MODERATE
<b>MANU</b>	20
[GAIN] : A/C SEA MENU	
[MENU/ESC] : Exit.	

2. Press up arrow to choose AUTO.
3. Press right arrow to open the automatic gain options window.
4. Press up or down arrow to choose ROUGH, MODERATE or CALM as appropriate.
5. Press left arrow to finish.

## Automatic Suppression of Sea Clutter

1. Press the [GAIN] key consecutively until the display shown below appears.

A/C SEA	
AUTO	: MODERATE
<b>MANU</b>	20
[GAIN] : A/C RAIN MENU	
[MENU/ESC] : Exit.	

2. A/C SEA adjustment window
3. Press up arrow to choose AUTO.
4. Press right arrow to open the automatic A/C SEA options window.
5. Press up or down arrow to choose ROUGH, MODERATE or CALM as appropriate.
6. Press left arrow to finish.

## Suppressing Rain Clutter

1. Press the [GAIN] key consecutively until the display shown below appears.

A/C RAIN	
◀ 65 ▶	
[GAIN] : GAIN MENU	
[MENU/ESC] : Exit.	

2. While observing the screen and the A/C RAIN tuning bar, press left or right arrow to adjust the A/C RAIN. The setting range is 0-100.
3. Press the [MENU/ESC] key to finish.

## Measuring the Range by VRM, Measuring the Bearing by EBL

1. Press the [MARK] key to show the Mark menu.

MARK MENU	
<input type="checkbox"/>	[GAIN] : EBL
<input type="checkbox"/>	[ALARM] : VRM
<input type="checkbox"/>	[MARK] : TLL OUTPUT

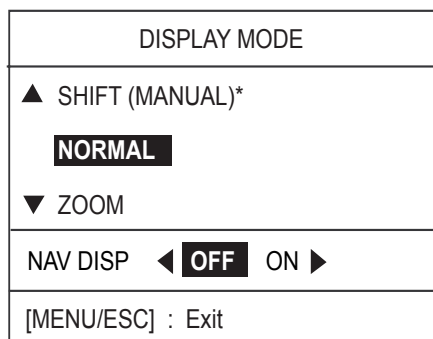
2. **Range:** Press the [ALARM] key to display the VRM.  
**Bearing:** Press the [GAIN] key to display the EBL.
3. **Range:** Operate the cursor pad to place the VRM on the inside edge of the target.  
**Bearing:** Operate the cursor pad to bisect the target with the EBL.

---

## Shift, Zoom

---

1. Use the cursor pad to place the cursor where you want to shift own ship position or zoom.
2. Press the [MODE] key.



3. Press up arrow to choose SHIFT (MANUAL) or down arrow to choose ZOOM.
4. Press the [MENU/ESC] key to close the menu.

---

## Interference Rejection

---

1. Press the [MENU/ESC] key.
2. Press up or down arrow to choose INT REJECTION from page 1.
3. Press right arrow.
4. Press up or down arrow to choose OFF, LOW, MEDIUM or HIGH as appropriate.
5. Press the [MENU/ESC] key to finish.

---

## Erasing the Heading Line

---

1. Press the [MENU/ESC] key to open the User menu.
2. Press up or down arrow to choose HDG LINE OFF from page 2.
3. Press right arrow to turn the heading line off.
4. Press the [MENU/ESC] key to finish.

---

## Echo Trails

---

1. Press the [MENU/ESC] key.
2. Press up or down arrow to choose ECHO TRAIL from page 2.
3. Press right arrow to open the options window.
4. Press up or down arrow to choose appropriate time.
5. Press left arrow.
6. Press the [MENU/ESC] key to finish.

---

## Echo Stretch

---

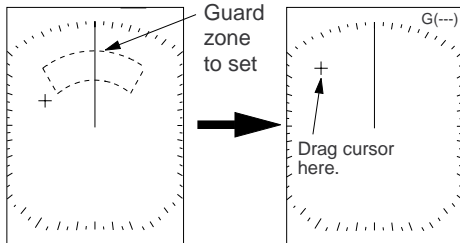
1. Press the [MENU/ESC] key.
2. Press up or down arrow to choose ECHO STRETCH from page 1.
3. Press right to open the options window.
4. Press up or down arrow to choose OFF, LOW or HIGH as appropriate
5. Press the [MENU/ESC] key to finish.

---

## Guard Alarm

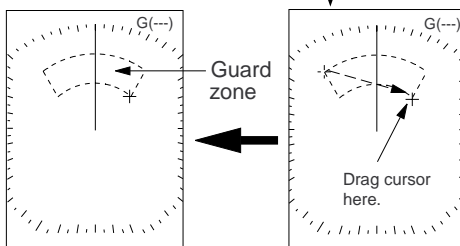
---

1. Operate the cursor pad to place the cursor at the top left corner for the zone and then press the [ALARM] key.
2. Operate the cursor pad to place the cursor at the bottom right corner for the zone and then press the [ALARM] key.



Mentally create the guard zone to set.

- 1) Drag cursor to top left corner for zone and press [ALARM].



Guard zone completed.

- 2) Drag cursor to bottom right corner for zone and press [ALARM].

---

## PROG Key

---

1. Press the [PROG] key.
2. Press up or down arrow to choose appropriate option.
3. Press the [MENU/ESC] key to finish.

---

## Watchman

---

1. Press the [MENU/ESC] key.
2. Press up or down arrow to choose WATCHMAN TIME from page 2.
3. Press right arrow.
4. Press up or down arrow to choose appropriate time out.
5. Press the [MENU/ESC] key to finish.